

GCF
task force

www.gcftaskforce.org

BRAZIL Acre, Amapá, Amazonas, Mato Grosso, Pará, Tocantins

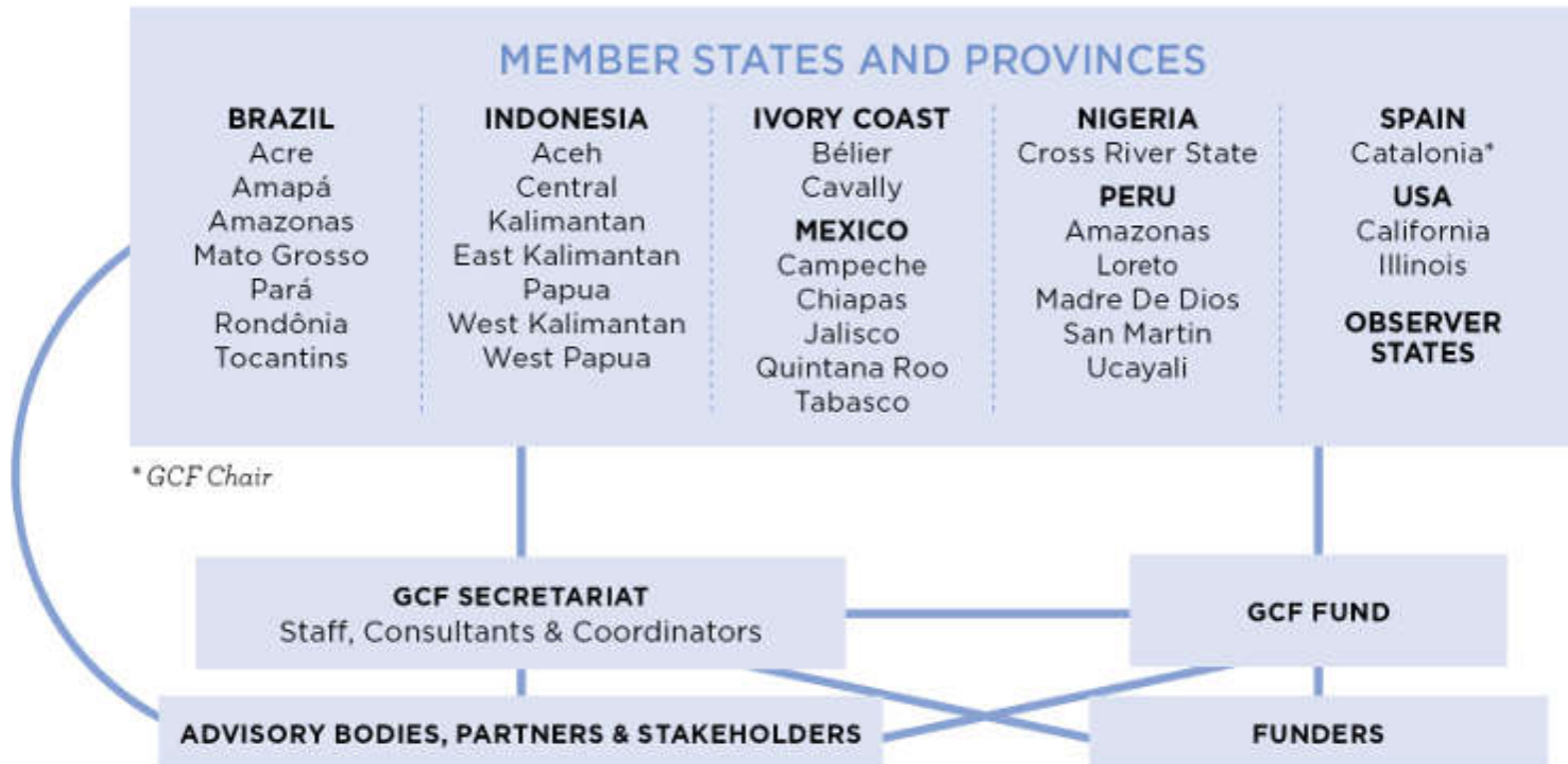
INDONESIA Aceh, Central Kalimantan, East Kalimantan, Papua, West Kalimantan, West Papua | **MEXICO** Campeche, Chiapas

NIGERIA Cross River State | **PERU** Loreto, Madre de Dios, San Martin, Ucayali | **SPAIN** Catalonia | **USA** California, Illinois



Background

- Lack of global-national policies to drive climate actions into the sub-national policies and authorities
- GCF was announced by 2008 through an MoU between Governor of California and each of involved state/province [Indonesia: Aceh and Papua]





GCF: CURRENT STATUS

- Established 2009 with 10 states & provinces
- Today: 29 states & provinces from 8 countries
- More than 25% of world's tropical forests in GCF states & provinces
- More than 75% of Brazil's and Peru's tropical forests in GCF states & provinces
- Almost 60% of Indonesia's tropical forests in GCF states & provinces
- Tropical forest GCF states & provinces are early movers in building comprehensive, jurisdictional programs to reduce emissions from deforestation & land use
- California could be first GHG compliance market to recognize emissions reductions from jurisdictional programs



www.gcftaskforce.org

BRAZIL Acre, Amapá, Amazonas, Mato Grosso, Pará, Tocantins

INDONESIA Aceh, Central Kalimantan, East Kalimantan, Papua, West Kalimantan, West Papua | **MEXICO** Campeche, Chiapas

NIGERIA Cross River State | **PERU** Loreto, Madre de Dios, San Martin, Ucayali | **SPAIN** Catalonia | **USA** California, Illinois



Rio Branco Declaration

- Reduce deforestation 80% by 2020 if adequate long-term financing available
- Dedicate substantial share of pay-for-performance funds to indigenous & traditional communities
- Develop partnerships with indigenous organizations & with sustainable supply chain initiatives



www.gcftaskforce.org

BRAZIL Acre, Amapá, Amazonas, Mato Grosso, Pará, Tocantins

INDONESIA Aceh, Central Kalimantan, East Kalimantan, Papua, West Kalimantan, West Papua | **MEXICO** Campeche, Chiapas

NIGERIA Cross River State | **PERU** Loreto, Madre de Dios, San Martín, Ucayali | **SPAIN** Catalonia | **USA** California, Illinois



GCF Indonesia

- 6 provinces: Aceh, West Kalimantan, Central Kalimantan, East Kalimantan, Papua and West Papua
- Almost 60 % of Indonesian forest cover, with the largest stock from Papua and West Papua Province



www.gcftaskforce.org

BRAZIL Acre, Amapá, Amazonas, Mato Grosso, Pará, Tocantins

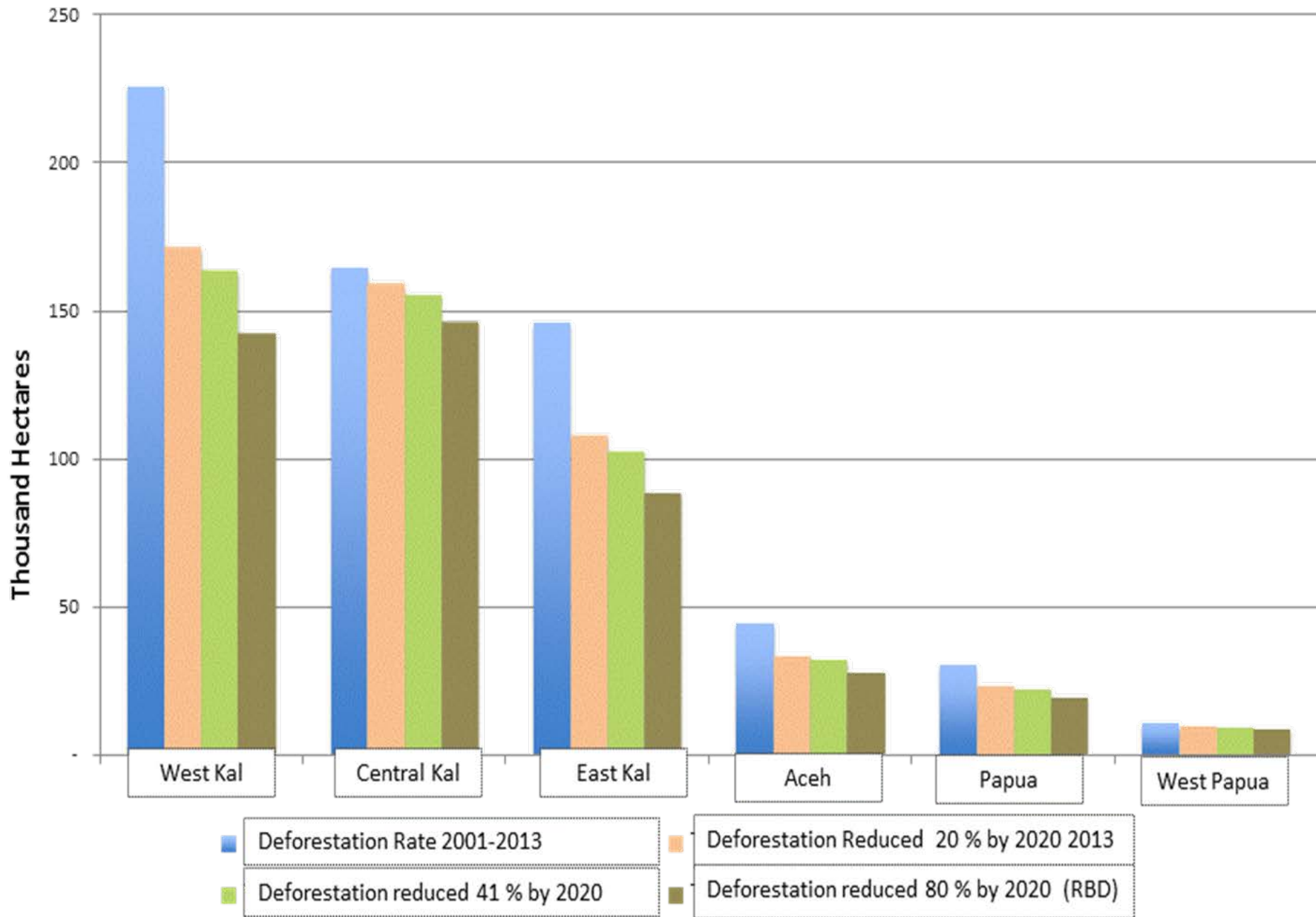
INDONESIA Aceh, Central Kalimantan, East Kalimantan, Papua, West Kalimantan, West Papua | **MEXICO** Campeche, Chiapas

NIGERIA Cross River State | **PERU** Loreto, Madre de Dios, San Martin, Ucayali | **SPAIN** Catalonia | **USA** California, Illinois



Jurisdiction Approach

- Based on RBD, six provinces will reduce deforestation from 323.749 ha/year from 2001-2009 to 64.749 ha/year by 2020
- The strategy to achieve these commitments is operationalized through three main activities:
 1. Strengthening the forest management unit, control the spatial planning and license
 2. Building alliance with private sectors to ensure the sustainable supply change of commodities
 3. Ensure the low carbon emission development that is inclusive for indigenous peoples and local communities participation






2020 reduction scenario

- If the 6 members of GCF will achieve the 80 % deforestation reduction target by 2020, the aggregation of reduced deforestation by 2020 is about 13,294,291 hectare. This is almost similar to the whole GHG emissions reductions of 26 % scenario from forestry sector at the national scale by 2020
- The participation of provincial government is very significant to achieve the national target.
- Three main activities of GCF members from 2016 onwards coincide with the new amendment of regional autonomy law

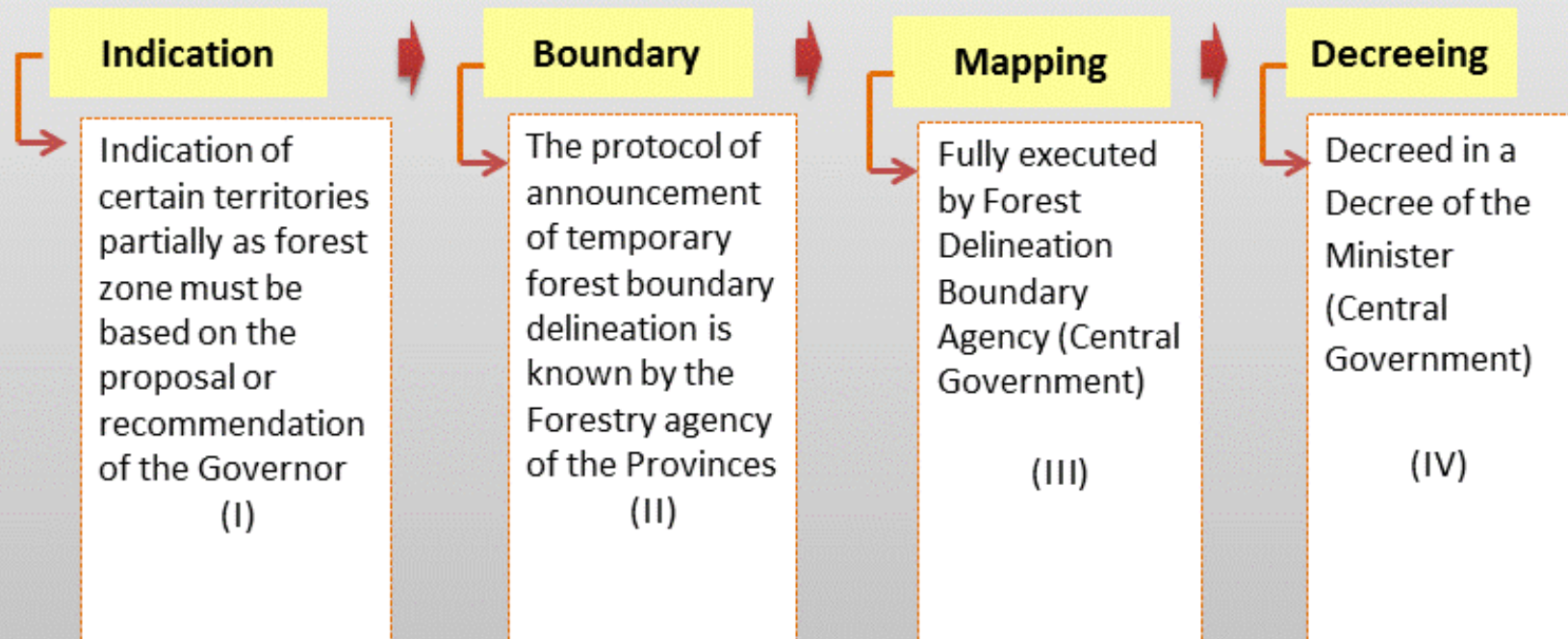


Current Jurisdiction Power

- By new regional autonomy law 23/2014, District authorities to forest area are removed to the provinces, including forest management unit.
- The implications to the future of forest planning and utilization:
 - The proposal to convert forest area to non-forest area will be based on Governor's recommendation [previously Head of Districts/Mayors gave the recommendation]
 - Technical recommendation to issue permit over the forest area will be issued by Forestry Agency at the Province



Provincial Government Authority Concerning Forest Status and License Under the Law 23/2014





Thank You!



www.gcftaskforce.org

BRAZIL Acre, Amapá, Amazonas, Mato Grosso, Pará, Tocantins

INDONESIA Aceh, Central Kalimantan, East Kalimantan, Papua, West Kalimantan, West Papua | **MEXICO** Campeche, Chiapas

NIGERIA Cross River State | **PERU** Loreto, Madre de Dios, San Martín, Ucayali | **SPAIN** Catalonia | **USA** California, Illinois